



COW

牛 ウシ

BA01



donkey

驢 カウ

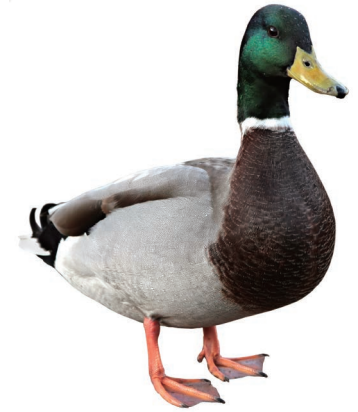
BA02



pig

豬 ブタ

BA03



duck

鴨 カモ

BA04



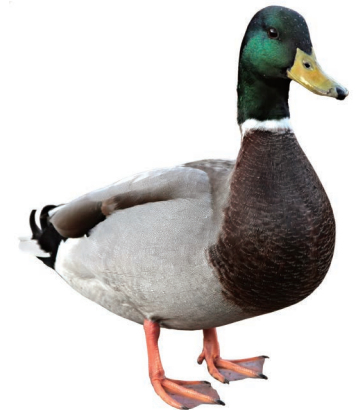
BA01



BA02



BA03



BA04

COW

牛 ウシ

BA01

donkey

驢 カウ

BA02

pig

豬 ブタ

BA03

duck

鴨 カモ

BA04



hen

雞^ニ

BA05



turkey

火^カ雞^ニ

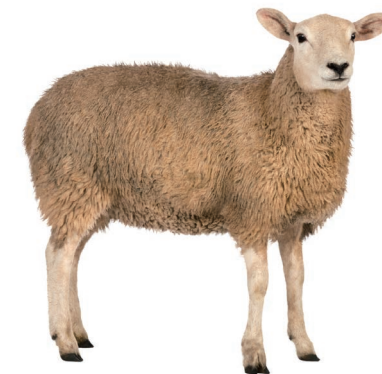
BA06



horse

馬^マ

BA07



sheep

綿^{ワタ}羊^ニ

BA08



BA05



BA06



BA07



BA08

hen

雞^ニ

BA05

turkey

火^カ雞^ニ

BA06

horse

馬^マ

BA07

sheep

綿^{ワタ}羊^ニ

BA08



lamb

羔^カ羊^ニ

BA09



goose

鵞^ガ

BA10



rabbit

兔^ウ子^コ

BA11



goat

山^{ヤマ}羊^ニ

BA12



BA09



BA10



BA12



BA12

lamb

羔^カ羊^ニ

BA09

goose

鵞^ガ

BA10

rabbit

兔^ウ子^コ

BA12

goat

山^{ヤマ}羊^ニ

BA12